



Silver Cascade Falls Trail



The **Silver Cascade Falls Trail** is a popular short trail that starts at Helen Hunt Falls and in a short amount of time allows you to experience the beauty of North Cheyenne Canon and two beautiful waterfalls.

[Click here to view photos of this trail](#)
(Password = havefun)

Use of Trail:	Hiking Only
Length of Trail:	0.70 Miles Roundtrip
Elevation Gain:	7,226 Ft. to 7,424 Ft. / 198 Ft Gain
Hiking Difficulty:	Easy (short but some steep areas) <u>(see ratings here)</u>
Fees / Permits:	None
Trail Contact:	Colorado Springs Dept of Parks & Rec. 1401 Recreation Way Colorado Springs, CO. 80905 (719)385-5940
Approx. Hiking Time:	30 – 45 Minutes Roundtrip
Terrain Type:	Wooded w/ Some Open Areas / Hilly
Trail Characteristics:	Dirt / Gravel / Some Railroad Tie Stairs
Views:	City of Colorado Springs / Eastern Plains
Pets:	Permitted on Leash Only
Other Nearby Trails:	Columbine Trail
Geocaches / Letterboxes:	None

GPS Waypoint Files are also available for this trail. This file includes the GPS waypoints for each trail feature listed and can be accessed and downloaded directly to your GPS unit.

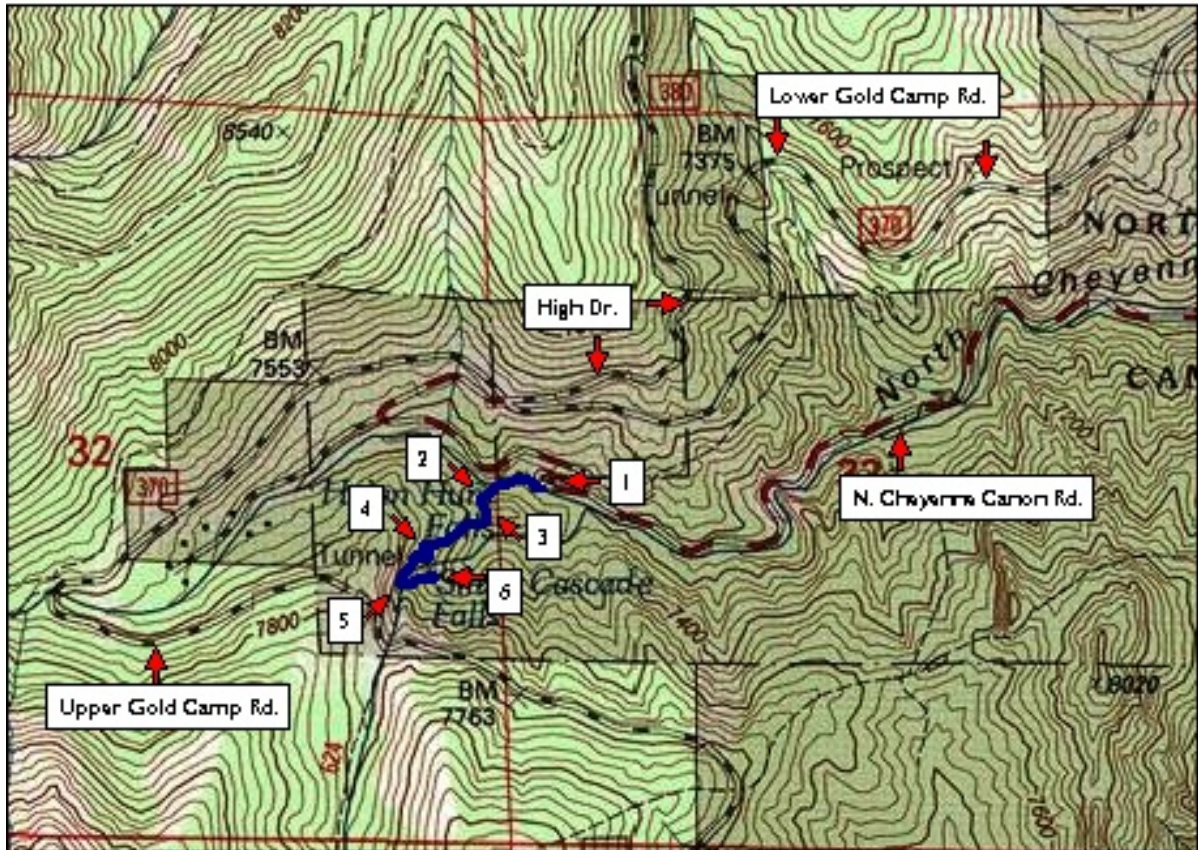
[Click here for the instructions on how to download the GPS waypoint file.](#)

[Click here to download the GPS waypoint file for this trail.](#)

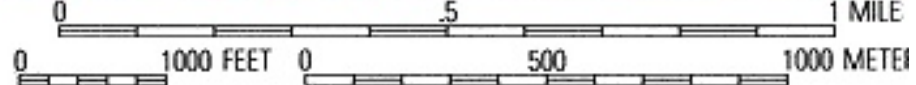


Silver Cascade Falls Trail

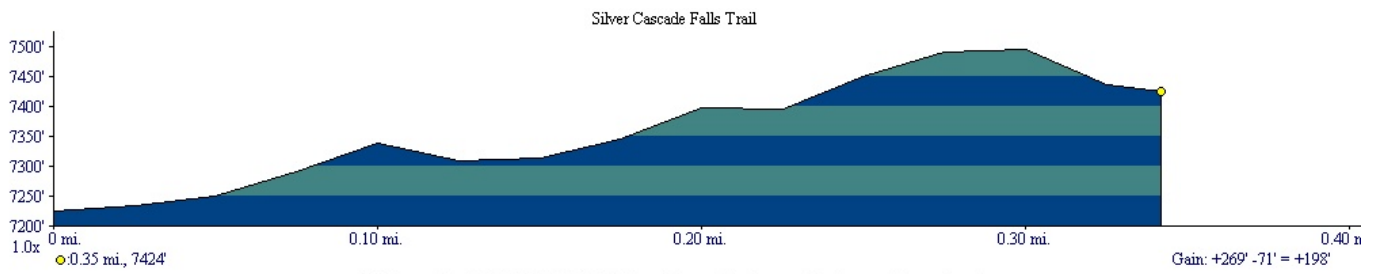
Silver Cascade Falls Trail



TN/MN
10°



Map created with TOPO!® ©2003 National Geographic (www.nationalgeographic.com)



Profile created with TOPO!® ©2003 National Geographic (www.nationalgeographic.com/topo)

N. Cheyenne Canon / Stratton Open Space Trail Series

Silver Cascade Falls Trail

Trailhead Directions

From the I-25 in Colorado Springs, exit at S. Nevada Avenue (Exit 140 A or B). Head south on South Nevada Ave. for about 0.35 miles and turn west on West Cheyenne Blvd. Proceed 2.75 mi. to the intersection of N. Cheyenne Canon Road & S. Cheyenne Canon Road. The Starsmore Discovery Center is located here. Turn right at this intersection onto N. Cheyenne Canon Road (past the iron gate) and travel up the winding road for 2.56 miles to the trailhead on the left side of the road. Look for the trailhead at a sharp curve in the road at Helen Hunt Falls (there is also a seasonal visitor's center here). The parking area across from the trailhead is paved.

[Click here for map to trailhead \(courtesy of MapQuest\)](#)

Waypoint Log

- 1 @ 0.00 Mi. - Trailhead and paved parking area. Climb stairs to the top of Helen Hunt Falls.
- 2 @ 0.10 Mi.- Switchback to the left. Trail leaves creek.
- 3 @ 0.13 Mi. - Switchback to the right. Trail now follows the creek.
- 4 @ 0.21 Mi. - Lower viewing terrace for Silver Cascade Falls. There are interpretive signs here.
- 5 @ 0.30 Mi. - Small bridge over creek. Follow the trail to the left as it nears the Falls (do not go up the steep social trail to the right)
- 6 @ 0.35 Mi. - Upper viewing area for Silver Cascade Falls. There are interpretive signs here.

Other Trails Accessible from this Trail [\(Click on Trail Name Below to Access Trail Guide\)](#)

- [Columbine Trail](#)