



## Strawberry Hill Trail



[Click here  
to view photos of this trail](#)  
(Password = havefun)

The **Strawberry Hill Trail** is a great trail for a short hike and is used mostly by nearby residents. It can also become a longer hike by linking to Old Stage Road which has a scenic meadow and great views of Mt. Cutler.

<b>Use of Trail:</b>	Hiking / Biking
<b>Length of Trail:</b>	0.5 Miles Roundtrip – Short Loop 1.65 Miles Roundtrip – Old Stage Rd.
<b>Elevation Gain:</b>	6,322 Ft. to 6,452 Ft. / 130 Ft Gain – Short Loop 6,322 Ft. to 6,762 Ft. / 440 Ft. Gain – Old Stage Rd.
<b>Hiking Difficulty:</b>	Easy ( <a href="#">see ratings here</a> )
<b>Fees / Permits:</b>	None
<b>Trail Contact:</b>	Colorado Springs Dept. of Parks & Rec. 1401 Recreation Way, Colorado Springs, CO. 80905 (719)385-5940
<b>Approx. Hiking Time:</b>	<1 Hr. Roundtrip – Short Loop 1.5 Hrs. Roundtrip – Old Stage Rd.
<b>Terrain Type:</b>	Flat to Rolling / Some Woods
<b>Trail Characteristics:</b>	Single Track – Dirt / Gravel
<b>Views:</b>	Mt. Cutler / Meadows
<b>Pets:</b>	Permitted on Leash Only
<b>Other Nearby Trails:</b>	None
<b>Geocaches / Letterboxes:</b>	Yes

**GPS Waypoint Files** are also available for this trail. This file includes the GPS waypoints for each trail feature listed and can be accessed and downloaded directly to your GPS unit.

[Click here for the instructions on how to download the GPS waypoint file.](#)

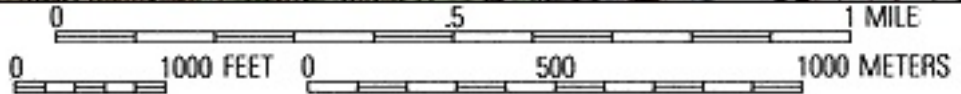
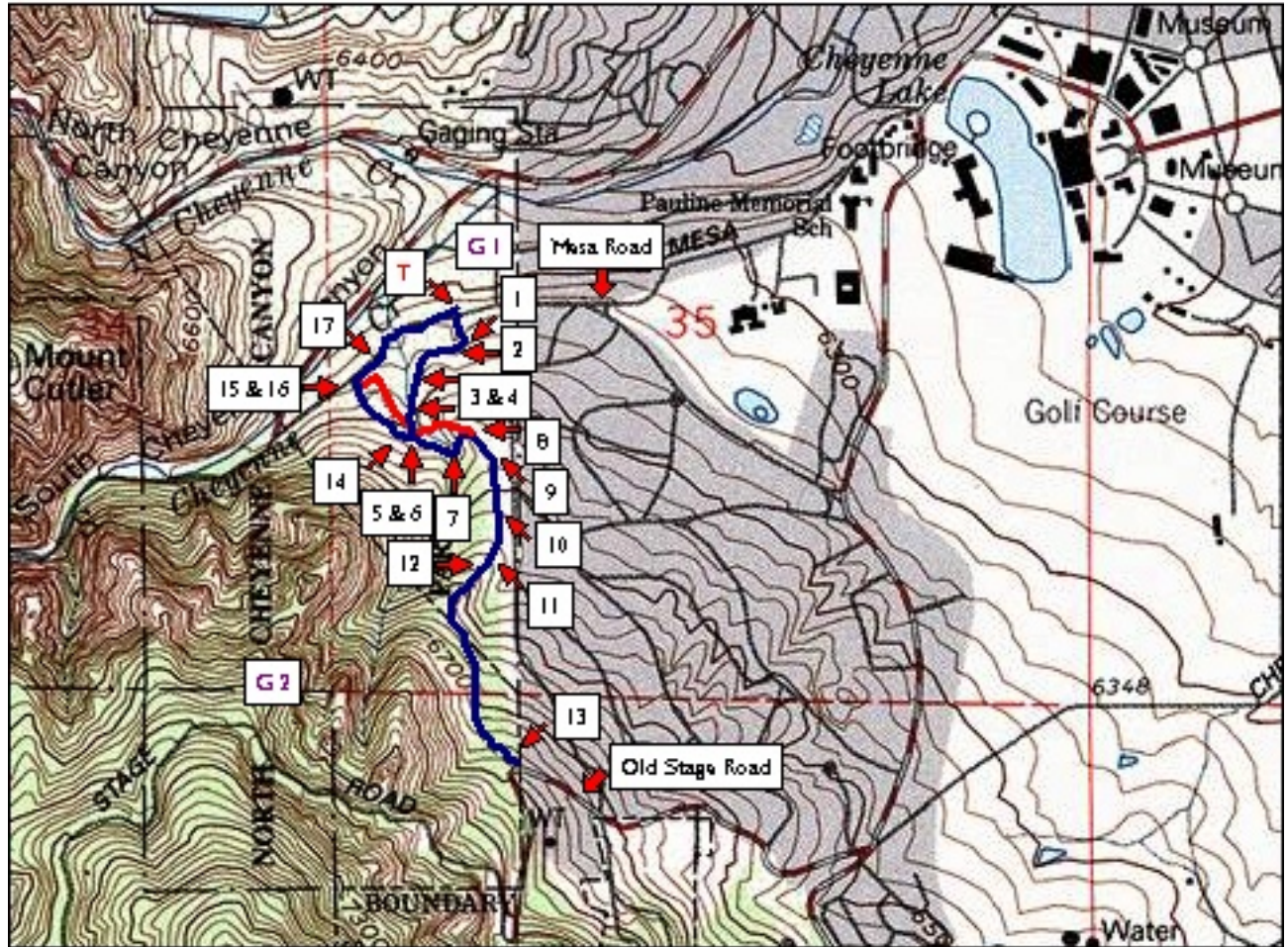
[Click here to download the GPS waypoint file for this trail.](#)



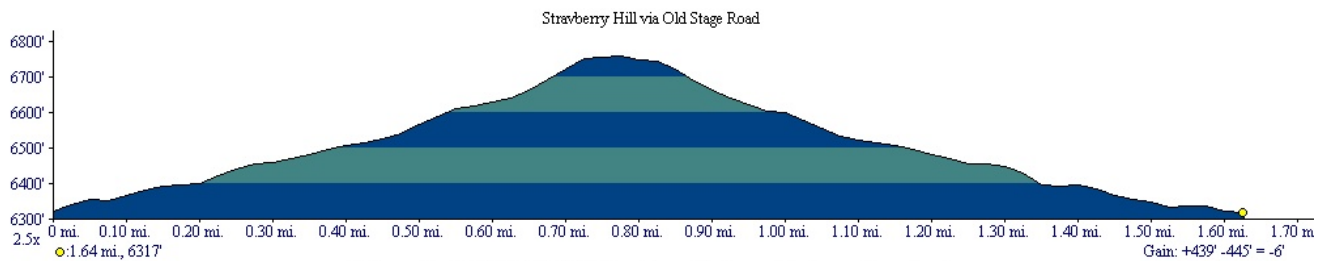
# Strawberry Hill Trail

# Trail 6

## Strawberry Hill Trail



Map created with TOPO!® ©2003 National Geographic ([www.nationalgeographic.com](http://www.nationalgeographic.com))



Profile created with TOPO!® ©2003 National Geographic ([www.nationalgeographic.com/topo](http://www.nationalgeographic.com/topo))

# N. Cheyenne Canon / Stratton Open Space Trail Series

## Strawberry Hill Trail

### Trailhead Directions

From the I-25 in Colorado Springs, exit at S. Nevada Avenue (Exit 140 A or B). Head south on South Nevada Ave. for about 0.35 miles and turn west (towards the mountains) onto West Cheyenne Blvd. Proceed 2.75 mi. to a 3-way intersection of N. Cheyenne Canon Road, S. Cheyenne Canon Road and Evans Avenue. The Starsmore Discovery Center is located here. Turn left onto Evans Ave. and travel about 0.15 miles to the road's end. Turn right onto Mesa Ave. and go about 0.10 miles to a gravel parking lot on the right. The trailhead is across Mesa Ave. near a gravel turn-off.

[Click here for map to trailhead \(courtesy of MapQuest\)](#)

### Waypoint Log

- T @ 0.00 Mi.** - Gravel parking area on Mesa Ave.
- 1 **@ 0.05 Mi.** - Trailhead begins across Mesa Ave. near a gravel turnoff and to the left of a locked gate and fence (between 2 boulders).
  - 2 **@ 0.10 Mi.** - Trail crosses over a small drainage ditch or intermittent stream.
  - 3 **@ 0.18 Mi.** - Trail crosses over creek bed again. Trail switches back over the end of a culvert.
  - 4 **@ 0.23 Mi.** - Trail crosses over the drainage area once again and leads into a meadow surrounded by large rock outcroppings.
  - 5 **@ 0.28 Mi.** - Trail intersection, the trail going north (or right) is the Strawberry Hill Loop trail and the longer hike to Old Stage Rd. goes south (or left).
  - 6 **@ 0.30 Mi.** - Trail switchback with numerous social trails to the right. Take larger trail to the left.
  - 7 **@ 0.40 Mi.** - Small social trail to the right
  - 8 **@ 0.45 Mi.** - Social trails to the right and left. Go straight on main trail.
  - 9 **@ 0.48 Mi.** - Social trail to the left leading to Alta Vista Road. Go straight.
  - 10 **@ 0.56 Mi.** - Intersection with 2 social trails on the left which lead to Alta Vista Road. Stay on main trail.
  - 11 **@ 0.60 Mi.** - Social trail to a small ravine. Go straight.
  - 12 **@ 0.64 Mi.** - Social trail to the right. Go straight.
  - 13 **@ 0.92 Mi.** - Intersection with Old Stage Road. Return back along the same trail.
  - 14 **@ 1.40 Mi.** - Fork in trail. Both trails will meet again at WP 16.
  - 15 **@ 1.50 Mi.** - Intersection of two trails from WP 15.
  - 16 **@ 1.50 Mi.** - Bridge over creek.
  - 17 **@ 1.56 Mi.** - Mesa Avenue, informal parking area along road.
- T @ 1.64 Mi.** - Return to parking area

### Geocaches

- **G1** **Geocache Name:** Sweet Spot #1 **Location:** N 38 / 47.365 & W 104 / 51.852
- **G2** **Geocache Name:** Cheyenne Mountain's Heart **Location:** N 38 / 46.907 & W 104 / 52.137

Check out [www.geocaching.com](http://www.geocaching.com) for more information